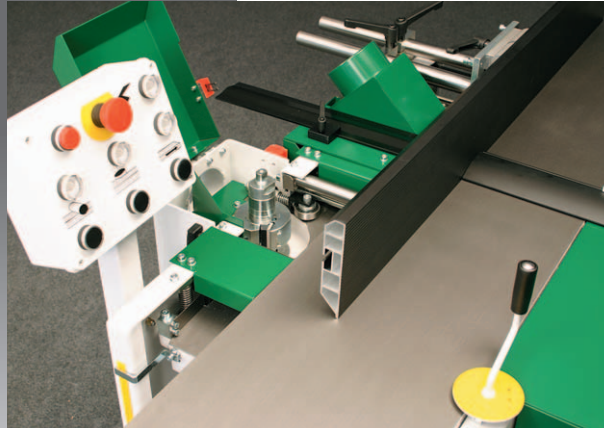


H410
H410 multi
H410 panel



MORETENS

Unique woodworking machinery

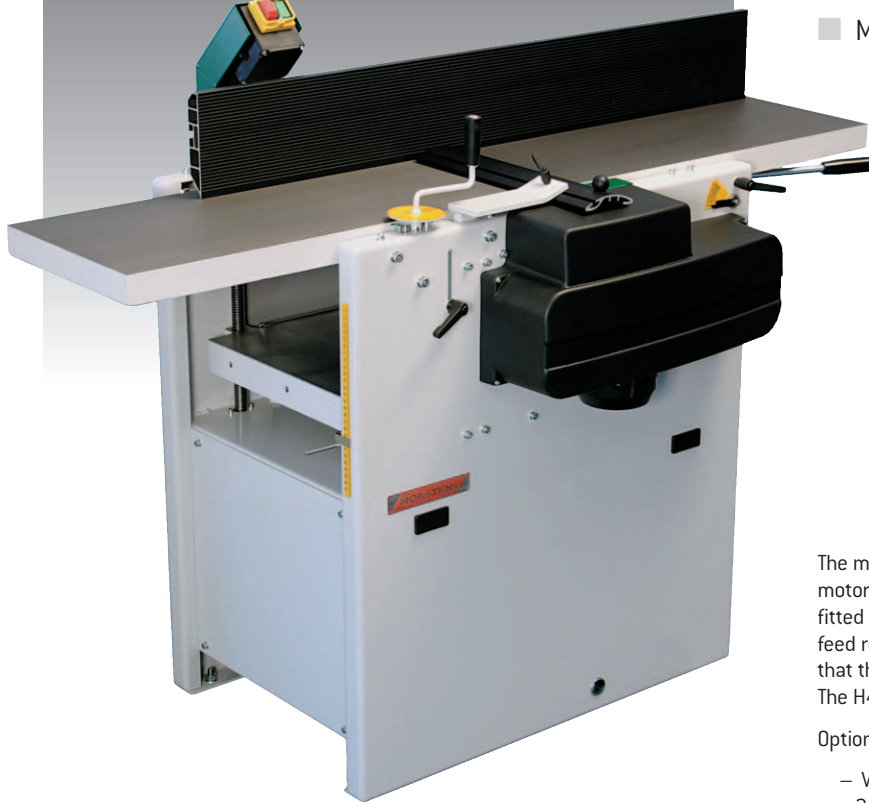


MOReTENS have been manufacturing woodworking machinery in Sweden for over 25 years. The innovative design of our machines is shaped by our customers' needs, bringing them cost effective solutions and unique advantages.



Moretens' Swedish manufacturing plant.
All the Moretens range is produced to the highest quality standards

H410 Combined planer & thicknesser



The H410 is an accurate, time saving and efficient planer thicknesser. With a generous 410mm thicknessing width and a planing capacity of 310mm, the H410 is a compact and versatile machine with many advantages to the small and medium size user. The planer tables are fixed which means that moving from planing to thicknessing mode can be one continuous operation and accuracy is maintained. With just one fixed dust extraction point the H410 is simpler to operate, more efficient and reduces operating time.

Another feature of the H410 is the unique suspension system which means the in-feed table and the out-feed tables are always adjusted parallel to each other. The in-feed table can be adjusted to 8mm using a lever with an easily read scale. The out-feed table height has exceptionally fine height adjustment. Using a simple lever system, two rotating eccentric bars give micro adjustment to 0.01mm.

The H410 has machined cast iron tables for stability, precision and durability.

The full-size fence is rigidly supported by two steel bars and can be tilted to 45 degrees.

- Thicknesser capacity
410 mm width x 260mm height
- Planing capacity 310mm
- No table movement required between planing and thicknessing modes
- Two motors – 3 kW cutter motor and 0.18kw feed motor
- Micro-adjustment to out-feed planer table

The machine is equipped with 2 motors, a 3kw [4hp] cutter motor and a 0.18kw [0.25hp] feed motor. The feed motor is fitted with an industrial gearbox mounted directly onto the feed rollers, giving a positive drive with the added advantage that the feed stops immediately when the power is shut off. The H410 has an electronic brake fitted as standard.

Options

- Variable speed gear that gives step less feed between 2 - 12 M/min
- 4 knife cutter block



H410 multi-planer Combined planer, thicknesser & moulder

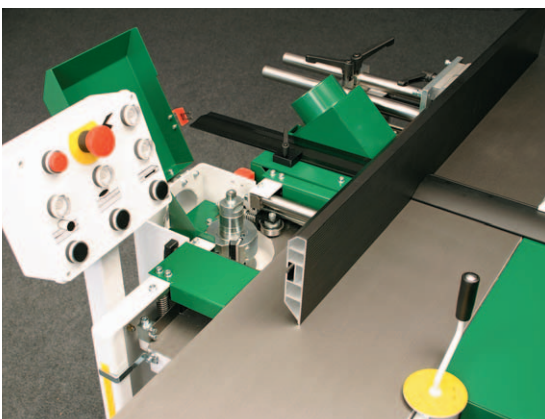
- Unique combination machine
- Machines 4 sides in only two operations
- 3 Motors



The H410 Multi-planer is a combined planer/thicknesser with an 100 mm vertical moulder on the thickening table. You can use the machine as a vertical moulder with a power feed. By utilizing the right-hand side of the thickening table for thicknessing and the left side for 2-sided moulding, you can use the machine to thickness, plane and mould without mechanical change. This patented design enables the machine to produce tongue and groove boards in two passes instead of the usual six to eight operations with standard machinery. This unique combination makes the Multi-Planer the obvious choice for carpenters who are looking for cost efficiency, versatility and precision in one machine.

The horizontal cutter block is equipped with 2 planer knives as standard but the block has 4 grooves. So you have the option of either mounting 4 knives in the block or 2 planer knives and two profile knives with a maximum moulding profile of 2mm.

The H410 Multi-planer also has the option of a variable speed planetary gear to the feed motor which will give feed speed of 2 - 12 m/min.



H410 panel Combined thicknesser & 2-sided moulder



- Thicknessing capacity 410mm x 260mm
- Moulding capacity 310 mm width x 100 mm height
- Vertical & Horizontal moulding
- Makes moulded boards in only two operations
- 3 Motors

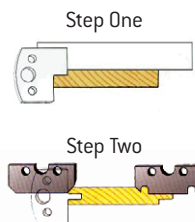
The H410 Panel will thickness and mould stock on 2 sides in one pass.

To work on all 4 sides requires 2 operations. The moulding capacity is an impressive 310 mm width and 100 mm height but by simply removing the fence the capacity for thicknessing increases to 410 mm width and 260 mm height. One unique advantage with this machine is that you can mould tapering panels and floor boards.

The H410 Panel will produce moulded stock with precision and efficiency; this makes it an ideal machine for small-scale saw mills, joinery & cabinet-makers, and is also perfect for builders wishing to produce their own finished mouldings.

The H410 Panel is available in two different models one for building-sites or small-scale sawmills and another fitted with a rubber out-feed roller for fine woodworking.

The H410 Multi- planer also has the option of a variable speed planetary gear to the feed motor which will give feed speed of 2 - 12 m/min.

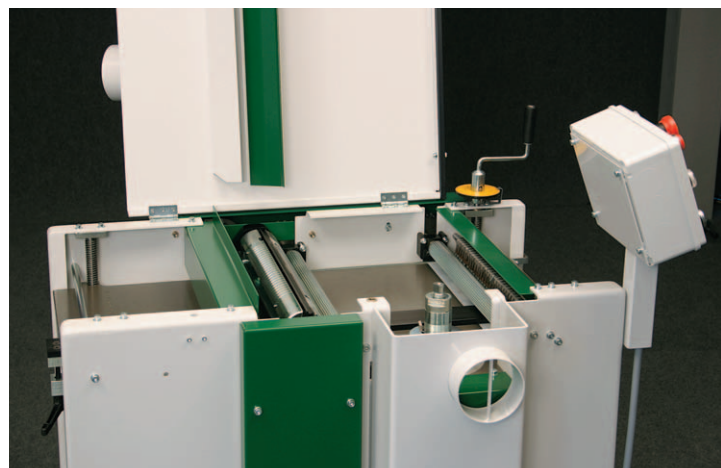


The H410 Panel combines a thicknesser with an 100 mm vertical moulder on the thicknessing table. This gives the machine the capability of thicknessing and moulding in one pass. The thicknessing capacity is 410mm width with a height of 260mm. The moulding capacity is 310mm width and 100 mm height.

This enables the machine to be used as a

- Thicknesser
- Thicknesser with a horizontal moulding depth of 10mm
- Vertical moulder with power feed
- 2-sided moulder

The height is adjusted with the thicknessing table and the width is adjusted using the fence on the thicknessing table. The horizontal cutter block is equipped with 2 planer knives as standard but the block has 4 grooves. So you have the option of either mounting 4 knives in the block or 2 planer knives and two profile knives with a maximum moulding profile of 10mm. The vertical block will take standard Euro cutters



Technical data

	H410 Combined planer & thicknesser	H410 multi-planer	H410 panel thicknesser & 2-sided moulder
Planer width	310 mm	310 mm	-
Planer table length	1400 mm	1400 mm	-
Planer, chip thickness	8 mm	8 mm	-
Planer fence	152 x 1100 mm	152 x 1100 mm	-
Thicknesser width	410 mm	410 mm	410 mm
Thicknesser height	260 mm	260 mm	260 mm
Thicknesser, table length	630 mm	830 mm	830 mm
Thicknesser, chip thickness	4 mm	4 mm	6 mm
Moulding height	-	100 mm	100 mm
Moulding width	-	310 mm	310 mm
Horizontal profile depth	-	2 mm	10 mm
Horizontal cutter diameter	72 mm	72 mm	72 mm
Feed rolls diameter	32 mm	32 mm	32 mm
Feed speed	5 m/min	5 m/min	5 m/min
Planetary gear for step less feeding	2 - 12 m/min	2 - 12 m/min	2 - 12 m/min
Spindle diameter, vertical moulder	-	30 mm	30 mm
Tool diameter, vertical moulder	-	140 mm	140 mm
Planer motor 3-phase	3 kW (4 hp)	3 kW (4 hp)	3 kW (4 hp)
Planer motor 1-phase	2,2 kW (3 hp)	-	-
Vertical moulder motor 3-phase	-	3 kW (4 hp)	3 kW (4 hp)
Spindle speed	5600 rpm	5600 rpm	5600 rpm
Feeding motor 3-phase	0,18 kW (0,25hp)	0,18 kW (0,25hp)	0,18 kW (0,25hp)
Feeding motor 3-phase, planetary gear	0,37kW (0,5hp)	0,37 kW (0,5hp)	0,37 kW (0,5 hp)

NB: Motor power measured in continuous duty

Accessories

Planer blades HSS 410 mm
 Planer blades HM 410 mm
 Indexable blades
 Wheel set
 Wedges for profile blades
 Extension tables on thicknesser table H410

Options

4-blades horizontal cutter
 Planetary gear for stepless feeding between 2 - 12 m/min
 Indexable blades with holder

